

Consolidated Subsidiaries (As of March 31, 2013)

■ **JAPAN**

- Tokyo Electron Yamanashi Limited
- Tokyo Electron Kyushu Limited
- Tokyo Electron Tohoku Limited
- Tokyo Electron Miyagi Limited
- Tokyo Electron TS Limited
- Tokyo Electron FE Limited
- Tokyo Electron Device Limited
- Tokyo Electron BP Limited
- Tokyo Electron Agency Limited

■ **U.S.A.**

- Tokyo Electron U.S. Holdings, Inc.
- Tokyo Electron America, Inc.
- TEL Technology Center, America, LLC
- TEL Venture Capital, Inc.
- TEL Epion Inc.
- TEL NEXX, Inc.
- TEL FSI, Inc.

■ **EUROPE**

- Tokyo Electron Europe Limited
- Tokyo Electron Israel Limited
- TEL Magnetic Solutions Limited
- TEL Solar AG

■ **ASIA**

- Tokyo Electron Korea Limited
- Tokyo Electron Taiwan Limited
- Tokyo Electron (Shanghai) Limited
- Tokyo Electron (Kunshan) Limited
- Tokyo Electron Singapore Pte. Limited

Investor Information (As of March 31, 2013)

Corporate Name and Head Office:

Tokyo Electron Limited
Akasaka Biz Tower
3-1 Akasaka 5-chome, Minato-ku,
Tokyo 107-6325, Japan

Established:

November 11, 1963

Annual General Meeting of Shareholders:

June

Common Stock:

Stock trading unit 100 shares
Authorized 300,000,000 shares
Issued and outstanding 180,610,911 shares
Number of shareholders 41,287

Common Stock Listed on:

The Tokyo Stock Exchange 1st Section
(Stock code: 8035)

Independent Auditors:

KPMG AZSA LLC

Administrator of Shareholders' Register:

Sumitomo Mitsui Trust Bank, Limited
8-4 Izumi 2-chome, Suginami-ku,
Tokyo 168-0063, Japan
Tel (toll free): 0120-782-031 (available only in Japan)

For Further Information, Contact:

Investor Relations
Tokyo Electron Limited
Akasaka Biz Tower
3-1 Akasaka 5-chome, Minato-ku,
Tokyo 107-6325, Japan
Tel: +81-3-5561-7000

URL:

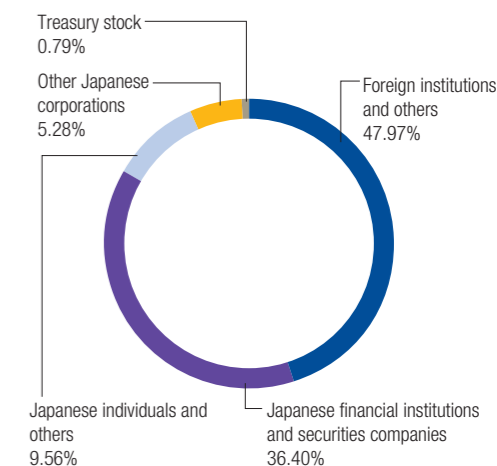
<http://www.tel.com/>

Principal Shareholders:

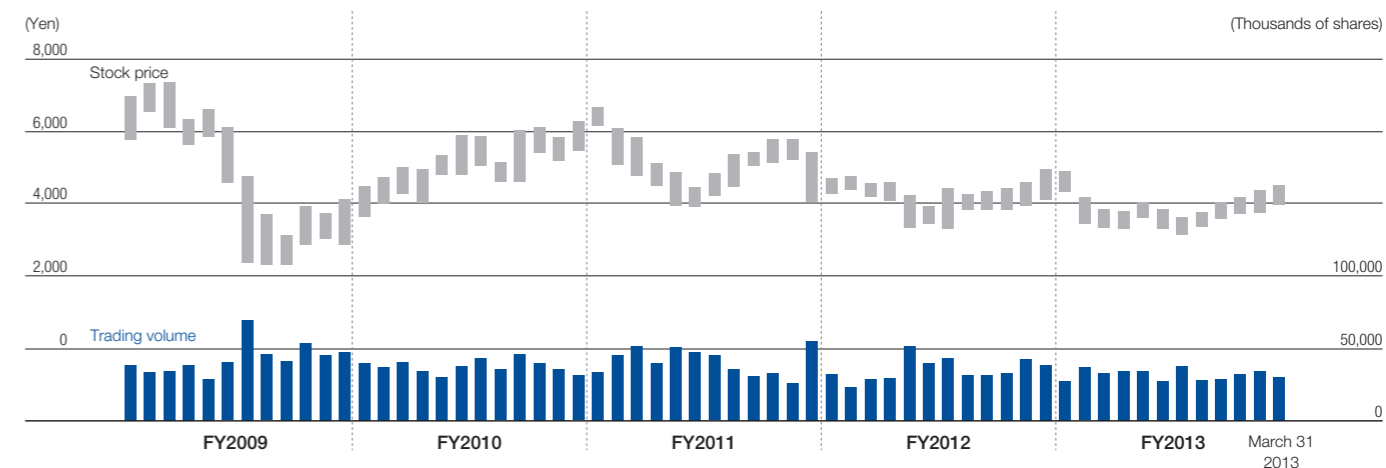
	Number of shares held (thousands)	Voting share ratio (%)
The Master Trust Bank of Japan, Ltd. (trust account)	19,146	10.68
Japan Trustee Services Bank, Ltd. (trust account)	13,824	7.71
Tokyo Broadcasting System Holdings, Inc.	7,727	4.31
Mellon Bank Treaty Clients Omnibus	5,247	2.92
State Street Bank and Trust Company 505225	4,389	2.44
SSBT OD05 Omnibus Account - Treaty Clients	3,744	2.08
Mellon Bank, N.A. as Agent for its Client Mellon Omnibus US Pension	3,623	2.02
The Bank of New York - JASDEC Treaty Account	3,465	1.93
Northern Trust Co. (AVFC) Sub Account American Clients	2,697	1.50
State Street Bank and Trust Company 505017	2,650	1.47

Shares of less than one thousand have been rounded down in the "Number of shares held."
Voting share ratio is calculated by the number of shares held excluding treasury stock (1,424,203 shares).

Distribution of Ownership Among Shareholders:



Stock Price and Trading Volume



58 consolidated subsidiaries in total, including the above 25 companies